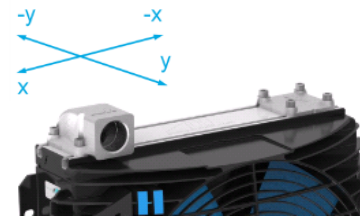


Connector TT rail Series

Description

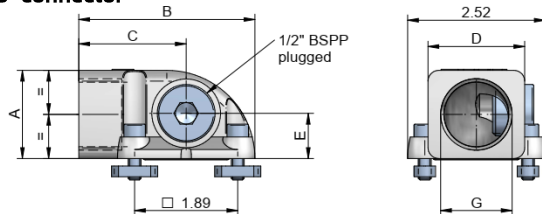
The asa rail system is the first worldwide flexible mounting and connection system for air blast heat exchangers. The flexibility comes from free choice of the port's direction. Each port on the radiator has 3 mounting possibilities. This well designed radiator concept brings another flexibility innovation hit to the standard cooler market: The oil flow direction can be chosen between u-flow direction and diagonal oil flow on each TT rail cooler!

The radiator rail slots are not only for connecting the hydraulic ports, it is also possible to have the system attached with e.g.: bypass systems, mounting of the cooler to an aggregate, measurement devices, and much more. Please contact us to discover the huge potential of this rail system for your application.

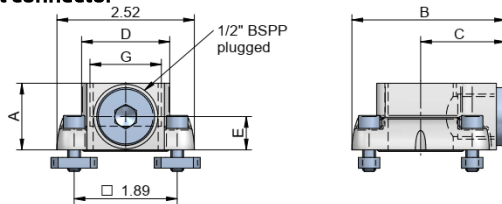


Dimensions

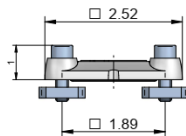
ported 90° connector



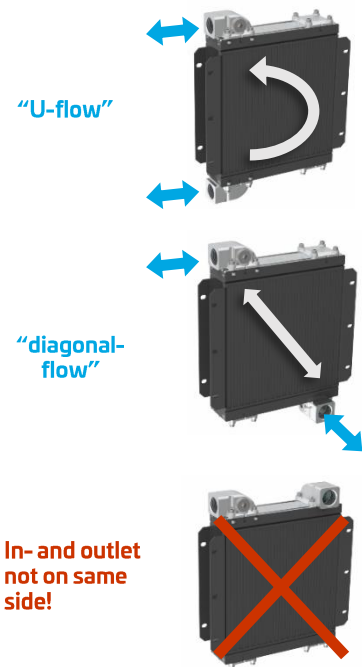
ported straight connector



blind connector



Oil flow directions with asa rail system!



Technical Data with NBR-sealing

order number	description	thread size
ILLZSET5U12U00	asa rail connector set 2x 90° SAE -12 ORB	UNF 1 1/16
ILLZSET5U16U00	asa rail connector set 2x 90° SAE -16 ORB	UNF 1 5/16
ILLZSET5U20U00	asa rail connector set 2x 90° SAE -20 ORB	UNF 1 5/8
ILLZSET5U12AU00	asa rail connector set 2x straight SAE -12 ORB	UNF 1 1/16
ILLZSET5U16AU00	asa rail connector set 2x straight SAE -16 ORB	UNF 1 5/16
ILLZSET5U20AU00	asa rail connector set 2x straight SAE -20 ORB	UNF 1 5/8
ILLZSET5U12BU00	asa rail connector set 1x 90° 1x straight SAE -12 ORB	UNF 1 1/16
ILLZSET5U16BU00	asa rail connector set 1x 90° 1x straight SAE -16 ORB	UNF 1 5/16
ILLZSET5U20BU00	asa rail connector set 1x 90° 1x straight SAE -20 ORB	UNF 1 5/8
ILLZSET5032U00	intermediate flange TT rail NG 32 kit	
Reach out for BSP		

This data sheet and the corresponding scale drawings are to be used as a general guideline and technical overview of our products. Please contact us if more exact information is needed. As we are constantly improving our products, their characteristics, dimensions and weights may also change, although we do our best to incorporate these changes continually. asa assumes no liability for any information therein, any errors, omissions, misprints, nor any direct or indirect damages, losses or costs resulting therefrom. Furthermore, it is herewith specified that the datasheet does not substitute the corresponding scale drawings, assembly and installation guidelines, nor the operating instructions.