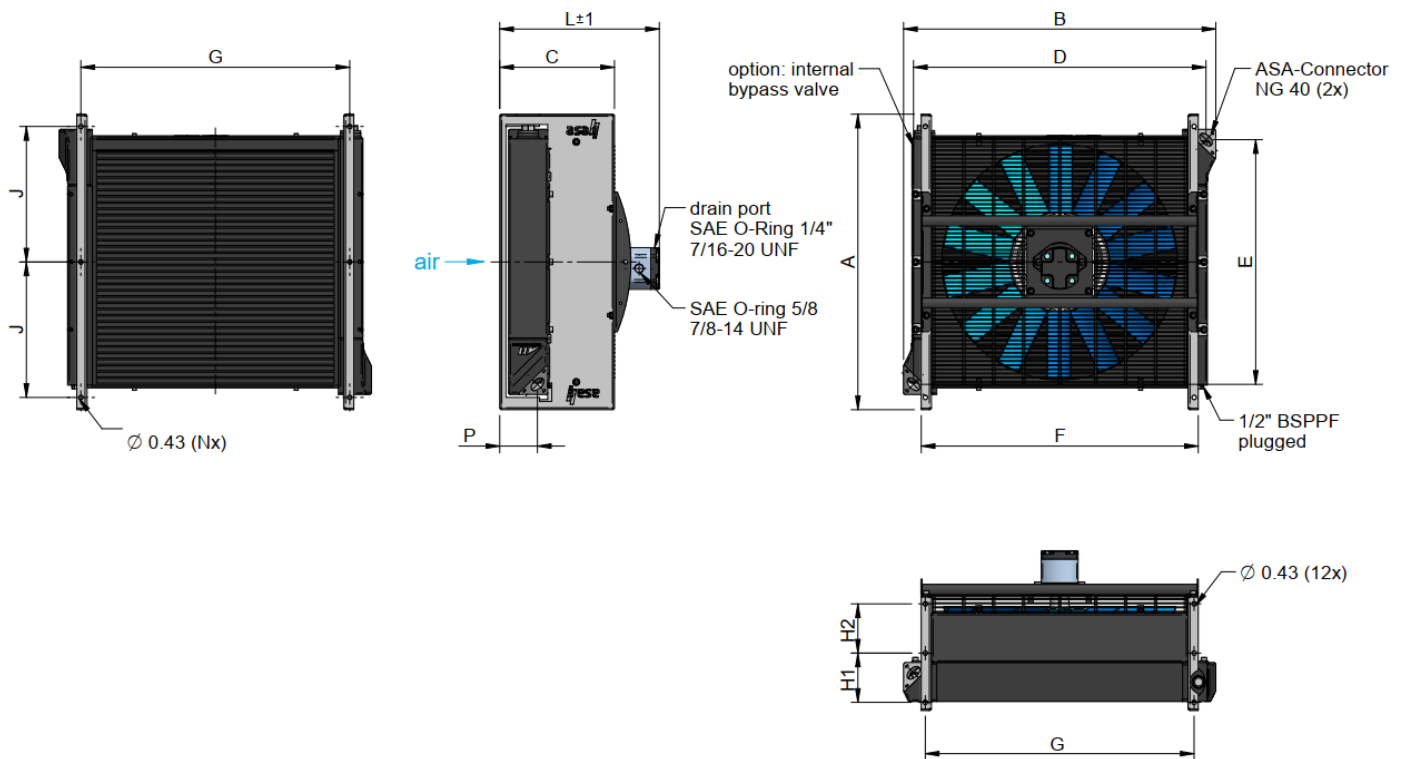


Oil / Air Cooler

Standard Range ASA Series

with 0.67 in³ hydraulic drive



Dimensions

order number	description	A	B	C	D	E	F	G	H1	H2	J	L	P	weight
		[in]	[in]	[in]	[in]	[in]	[in]	[in]	[in]	[in]	[in]	[in]	[in]	[lbs]
ASA0177AH11U03	ASA 0177 hydr. motor 0.67in ³	20.87	22.91	10.24	21.02	16.38	18.19	17.40	4.72	3.54	19.29	14.33	3.50	78.9
ASA0257AH11U03	ASA 0257 hydr. motor 0.67in ³	25.00	26.85	10.63	24.96	19.72	22.13	21.34	4.33	4.33	11.02	15.08	3.66	98.1
ASA0367AH11U03	ASA 0367 hydr. motor 0.67in ³	28.35	30.39	11.02	28.15	23.46	26.61	25.83	4.72	4.72	12.99	16.93	3.62	124.3
ASA0467AH11U03	ASA 0467 hydr. motor 0.67in ³	31.91	32.95	11.42	31.06	26.30	29.84	29.06	4.92	4.92	14.76	17.64	3.70	160.7
ASA0567AH11U03	ASA 0567 hydr. motor 0.67in ³	33.86	36.22	11.42	34.06	29.37	32.52	31.73	4.92	4.92	15.75	17.64	3.62	163.4
ASA0727AH11U03	ASA 0727 hydr. motor 0.67in ³	37.80	39.84	14.17	37.95	33.54	36.85	35.91	6.30	6.30	18.11	20.51	3.74	227.1
ASA0927AH11U03	ASA 0927 hydr. motor 0.67in ³	43.31	46.06	12.60	43.09	35.91	41.65	40.59	5.12	5.12	19.86	18.70	3.43	275.6

Oil / Air Cooler

Standard Range ASA Series

with 0.67 in³ hydraulic drive



Technical Data

order number	description	motor power	oil pressure	oil flow	rotation	air flow	noise level	optional internal bypass (30PSI)
		[HP]	[PSI]	[gpm]	[rpm]	[CFM]	[db(A)]	cooler order number
ASA0177AH11U03	ASA 0177 hydr. motor 0.67in ³	0.08	46	3,3	1000	1038	69	ASA0177AH12BPU00
		0.60	172	6,7	2000	2161	84	
		2.00	382	10,0	3000	3323	92	
ASA0257AH11U03	ASA 0257 hydr. motor 0.67in ³	0.14	80	3,3	1000	1713	70	ASA0257AH12BPU00
		1.11	318	6,7	2000	3590	85	
ASA0367AH11U03	ASA 0367 hydr. motor 0.67in ³	3.70	707	10,0	3000	5510	94	ASA0367AH11BPU00
		0.60	375	3,1	1000	3522	74	
ASA0467AH11U03	ASA 0467 hydr. motor 0.67in ³	2.06	857	4,6	1500	5545	83	ASA0467AH11BPU00
		4.91	1532	6,1	2000	7428	89	
		0.28	175	3,1	1000	2955	78	
ASA0567AH11U03	ASA 0567 hydr. motor 0.67in ³	1.14	445	4,9	1600	4866	88	ASA0567AH11BPU00
		2.97	843	6,7	2200	6803	95	
		0.27	169	3,1	1000	3200	78	
ASA0727AH11U03	ASA 0727 hydr. motor 0.67in ³	1.10	429	4,9	1600	5260	88	ASA0727AH11BPU00
		2.86	811	6,7	2200	7308	95	
		0.65	406	3,1	1000	6120	85	
ASA0927AH11U03	ASA 0927 hydr. motor 0.67in ³	1.80	803	4,3	1400	8746	93	ASA0927AH11BPU00
		3.81	1321	5,5	1800	11430	98	
		2.05	1280	3,1	1000	10483	90	
ASA0927AH11U03	ASA 0927 hydr. motor 0.67in ³	4.50	2161	4,0	1300	13967	96	on request
		8.34	3254	4,9	1600	17534	100	

Radiator Style C

material:	aluminum
working temperature range:	-4°F to +176°F (oil temperature)*
air fin shape:	wavy
working pressure:	370 PSI (static)

*...the indicated temperature is the maximum inlet temperature for the cooler radiator. Depending on the sealings in use, the application needs appropriate checking.

Installation System (see more information on page 43)

connection UN 1 5/8"	ILLZASA32U20U00 (2 pieces per cooler required)
connection UN 1 7/8"	ILLZASA40U24U00 (2 pieces per cooler required)

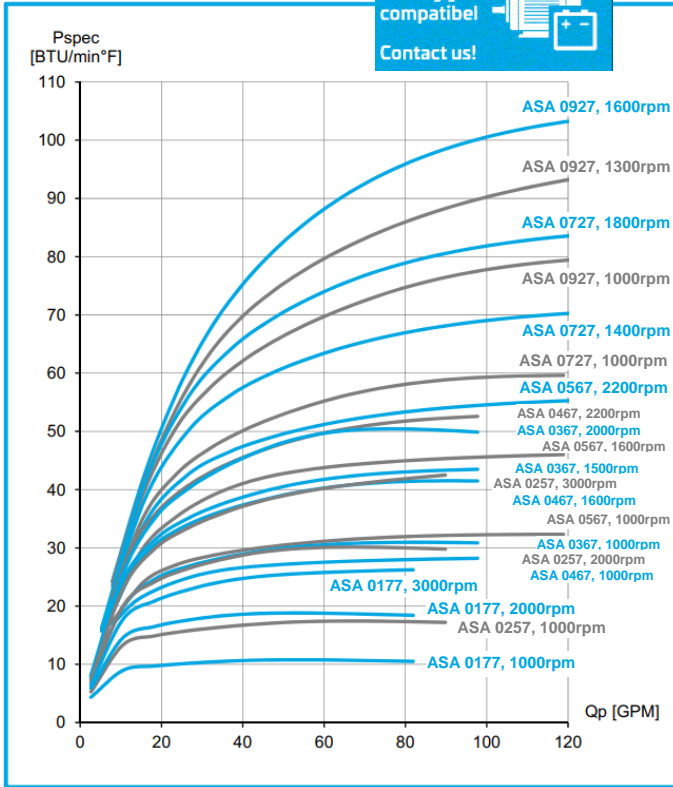
Oil / Air Cooler Standard Range ASA Series with 0.67 in³ hydraulic drive



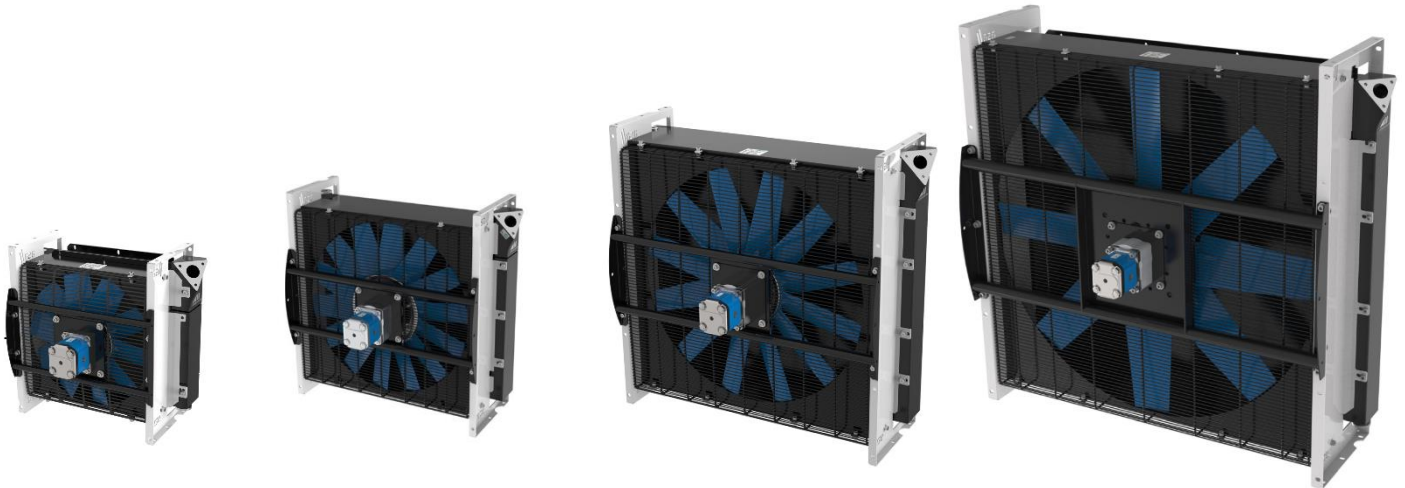
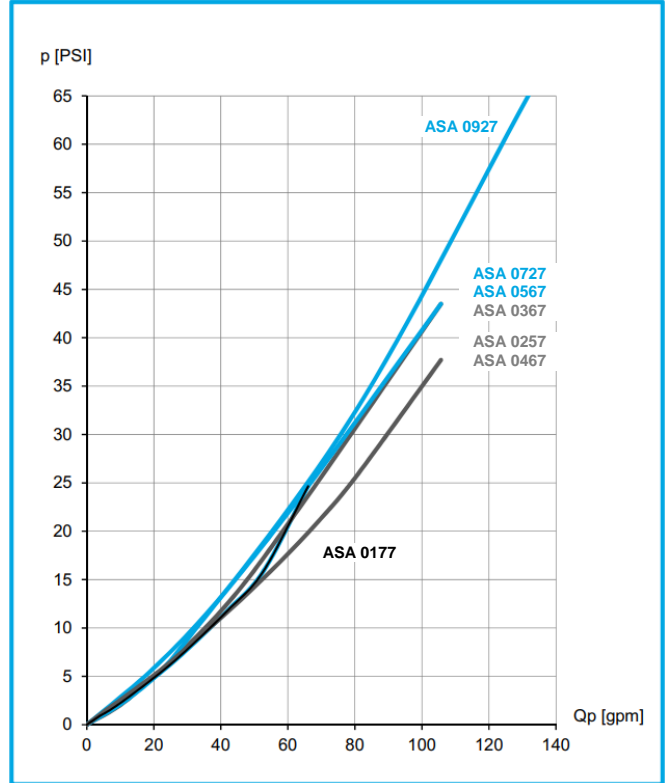
Performance specific cooling performance

all products
water/glycol
compatibel

Contact us!



pressure drop at 150 SSU



This data sheet and the corresponding scale drawings are to be used as a general guideline and technical overview of our products. Please contact us if more exact information is needed. As we are constantly improving our products, their characteristics, dimensions and weights may also change, although we do our best to incorporate these changes continually. asa assumes no liability for any information therein, any errors, omissions, misprints, nor any direct or indirect damages, losses or costs resulting therefrom. Any cooling performances and general technical values indicated in this catalogue are measured at a test bench according to asa testing procedures or calculated, based on such tests. They represent a basis for your product selection. Due to different conditions in testing and application environments the performance may also vary by +/- 15%. All sound values are determined in accordance with ISO 9614-2, DIN EN ISO 11203 accuracy class 3 or Machinery Directive 2006/42/EG and are A-rated. At some of the performance data, possible differences to competition data are possible. The reason to that are no existing standardized testing procedures on individual subjects, e.g. for cooling performance measurements. Therefore, we recommend all products to be checked under the system operating conditions. This is also true of vibrations and mechanical stress as well as for pressure peaks and thermal stress and any other relevant factors. General tolerances according to DIN ISO 2768-VL, General tolerances for casted parts according to EN ISO 8062-3 (DCTG 10). Tolerances for rubber parts are according to ISO 3302-1 (class M4-F+C). The tolerances of welding seams are defined by quality group D according to EN ISO 10042, if it is not specified on the actual scale drawing or data sheet. Any form of liability is excluded for the information included in this datasheet. All details and calculation values are checked to the best of our ability, but these do not ensure any intrinsic product properties: due to the wide-ranging possible applications, it is advised that all technical data herewith included be confirmed through testing carried out by the end-user. asa technology Produktions- und Vertriebs GmbH reserves the right to modify the product without any separate notification. This refers to both technical data and the product itself. Furthermore, it is herewith specified that the datasheet does not substitute the corresponding scale drawings, assembly and installation guidelines, nor the operating instructions.

DD-AUC-Series-Hydraulic-Drive-US-en-rev0-Homepage © asa hydraulik of America, February 2023 page 3/4

Oil / Air Cooler

Standard Range ASA Series

with 0.67 in³ hydraulic drive



Options

hydraulic motor	alternative displacements on request
temperature switch	ILLZTH4765KU00, ILLZTH6065KU00 (page 51)
tread plate & radiator guard	see page 47
internal bypass	alternative bypass settings (7 PSI / 50 PSI)
Intermediate plate NG 40	ILLZASA40-40G12U00 (page 43)

