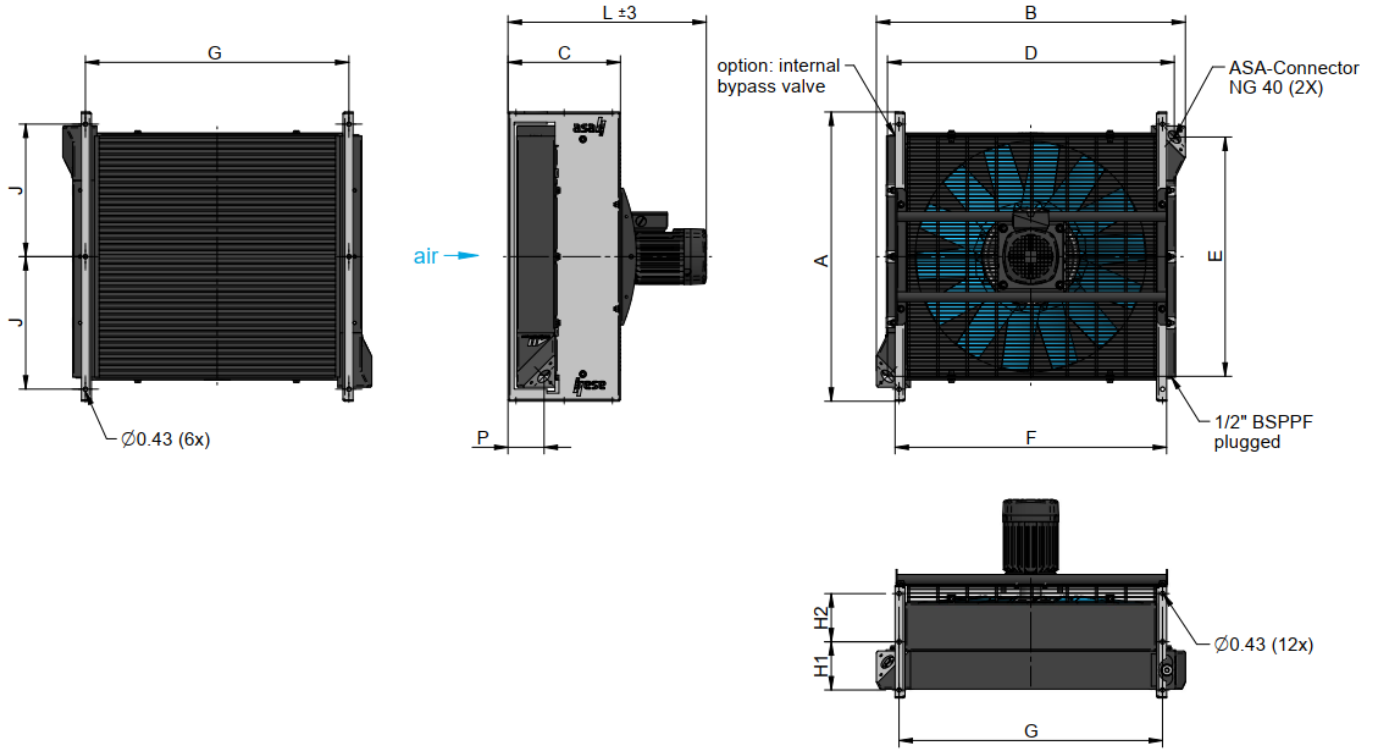


Oil / Air Cooler

Standard Range ASA Series

230/460V 60Hz AC



Dimensions

order number	description	A	B	C	D	E	F	G	H1	H2	J	L	P	weight
		[in]	[in]	[in]	[in]	[in]	[in]	[in]	[in]	[in]	[in]	[in]	[in]	[lbs]
ASA0177AA64U00	ASA 0177 0.25HP AC	20.87	22.91	10.24	21.02	16.38	18.19	17.40	4.72	3.54	19.29	19.1	3.50	86.60
ASA0177AA45U00	ASA 0177 0.50HP AC	20.87	22.91	10.24	21.02	16.38	18.19	17.40	4.72	3.54	19.29	19.1	3.50	85.30
ASA0257AA66U00	ASA 0257 0.50HP AC	25.00	26.85	10.63	24.96	19.72	22.13	21.34	4.33	4.33	11.02	20.5	3.66	107.14
ASA0257AA46U00	ASA 0257 0.75HP AC	25.00	26.85	10.63	24.96	19.72	22.13	21.34	4.33	4.33	11.02	20.5	3.66	106.48
ASA0367AA66U00	ASA 0367 0.50HP AC	28.35	30.00	11.02	28.15	23.46	26.61	25.83	4.72	4.72	12.99	21	3.62	138.60
ASA0367AA46U00	ASA 0367 0.75HP AC	28.35	30.00	11.02	28.15	23.46	26.61	25.83	4.72	4.72	12.99	21	3.62	130.90
ASA0367AA48U00	ASA 0367 1.50HP AC	30.91	30.00	11.02	28.15	23.46	26.61	25.83	4.72	4.72	12.99	21	3.62	141.02
ASA0467AA66U00	ASA 0467 0.50HP AC	30.91	32.95	11.42	31.06	26.30	29.84	29.06	4.92	4.92	14.76	21.7	3.70	175.78
ASA0467AA48U00	ASA 0467 1.50HP AC	30.91	32.95	11.42	31.06	26.30	29.84	29.06	4.92	4.92	14.76	21.7	3.70	189.70
ASA0467AA4BU00	ASA 0467 4.00HP AC	30.91	32.95	11.42	31.06	26.30	29.84	29.06	4.92	4.92	14.76	25	3.70	236.30
ASA0567AA66U00	ASA 0567 0.50HP AC	33.86	36.22	11.42	34.06	29.37	32.52	31.73	4.92	4.92	15.75	21.4	3.62	174.90
ASA0567AA48U00	ASA 0567 1.50HP AC	33.86	36.22	11.42	34.06	29.37	32.52	31.73	4.92	4.92	15.75	21.4	3.62	177.32
ASA0567AA4BU00	ASA 0567 4.00HP AC	33.86	36.22	11.42	34.06	29.37	32.52	31.73	4.92	4.92	15.75	24.7	3.62	203.06
ASA0727AA6AU00	ASA 0727 3.00HP AC	37.80	39.84	14.17	37.95	33.54	36.85	35.91	6.30	6.30	18.11	25.2	3.74	296.12
ASA0727AA4BU00	ASA 0727 4.00HP AC	37.80	39.84	14.17	37.95	33.54	36.85	35.91	6.30	6.30	18.11	25.2	3.74	289.30
ASA0927AA6CU00	ASA 0927 3.00HP AC	43.31	46.06	12.60	43.90	35.91	41.65	40.59	5.12	5.12	20.57	26.1	3.43	309.10
ASA0927AA6EU00	ASA 0927 5.50HP AC	43.31	46.06	12.60	43.90	35.91	41.65	40.59	5.12	5.12	20.57	28.6	3.43	392.92

This data sheet and the corresponding scale drawings are to be used as a general guideline and technical overview of our products. Please contact us if more exact information is needed. As we are constantly improving our products, their characteristics, dimensions and weights may also change, although we do our best to incorporate these changes continually. asa assumes no liability for any information therein, any errors, omissions, misprints, nor any direct or indirect damages, losses or costs resulting therefrom. Any cooling performances and general technical values indicated in this catalogue are measured at a test bench according to asa testing procedures or calculated, based on such tests. They represent a basis for your product selection. Due to different conditions in testing and application environments the performance may also vary by +/- 15%. All sound values are determined in accordance with ISO 9614-2, DIN EN ISO 11203 accuracy class 3 or Machinery Directive 2006/42/EG and are A-rated. At some of the performance data, possible differences to competition data are possible. The reason to that are no existing standardized testing procedures on individual subjects, e.g. for cooling performance measurements. Therefore, we recommend all products to be checked under the system operating conditions. This is also true of vibrations and mechanical stress as well as for pressure peaks and thermal stress and any other relevant factors. General tolerances according to DIN ISO 2768-vL, General tolerances for casted parts according to EN ISO 8062-3 (DCTG 10). Tolerances for rubber parts are according to ISO 3302-1 (class M4-F+C). The tolerances of welding seams are defined by quality group D according to EN ISO 10042, if it is not specified on the actual scale drawing or data sheet. Any form of liability is excluded for the information included in this datasheet. All details and calculation values are checked to the best of our ability, but these do not ensure any intrinsic product properties; due to the wide-ranging possible applications, it is advised that all technical data herewith included be confirmed through testing carried out by the end-user. asa technology Produktions- und Vertriebs GmbH reserves the right to modify the product without any separate notification. This refers to both technical data and the product itself. Furthermore, it is herewith specified that the datasheet does not substitute the corresponding scale drawings, assembly and installation guidelines, nor the operating instructions.

DD-AUC-Series-AC-US-en-rev0-Homepage © asa hydraulik of America, April 2022 page 1/4

Oil / Air Cooler

Standard Range ASA Series

230/460V 60Hz AC



Technical Data

order number	description	motor power	current	protection level	rotation	air flow	noise level	optional internal bypass (30PSI)
		[HP]	[A]		[rpm]	[CFM]	[db(A)]	cooler order number
ASA0177AA64U00	ASA 0177 0.25HP AC	0.25	0.6	IP 55	1120	1164	71	ASA0177AA64BPU00
ASA0177AA45U00	ASA 0177 0.50HP AC	0.50	1.0	IP 55	1655	1760	79	ASA0177AA45BPU00
ASA0257AA66U00	ASA 0257 0.50HP AC	0.50	1.1	IP 55	1105	1896	72	ASA0257AA66BPU00
ASA0257AA46U00	ASA 0257 0.75HP AC	0.75	1.4	IP 55	1680	2976	81	ASA0257AA46BPU00
ASA0367AA66U00	ASA 0367 0.50HP AC	0.50	1.1	IP 55	1105	2866	80	ASA0367AA66BPU00
ASA0367AA46U00	ASA 0367 0.75HP AC	0.75	1.4	IP 55	1680	3537	88	ASA0367AA46BPU00
ASA0367AA48U00	ASA 0367 1.50HP AC	1.50	2.1	IP 55	1720	4544	89	ASA0367AA48BPU00
ASA0467AA66U00	ASA 0467 0.50HP AC	0.50	1.1	IP 55	1105	3294	80	ASA0467AA66BPU00
ASA0467AA48U00	ASA 0467 1.50HP AC	1.50	2.1	IP 55	1720	5441	90	ASA0467AA48BPU00
ASA0467AA4BU00	ASA 0467 4.00HP AC	4.00	5.5	IP 55	1730	7972	93	ASA0467AA4BBPU00
ASA0567AA66U00	ASA 0567 0.50HP AC	0.50	1.1	IP 55	1105	3559	80	ASA0567AA66BPU00
ASA0567AA48U00	ASA 0567 1.50HP AC	1.50	2.1	IP 55	1720	5937	90	ASA0567AA48BPU00
ASA0567AA4BU00	ASA 0567 4.00HP AC	4.00	5.5	IP 55	1730	9093	93	ASA0567AA4BBPU00
ASA0727AA6AU00	ASA 0727 3.00HP AC	3.00	3,80	IP 55	1130	9241	84	ASA0727AA6ABPU00
ASA0727AA4BU00	ASA 0727 4.00HP AC	4.00	5,50	IP 55	1730	10968	97	ASA0727AA4BBPU00
ASA0927AA6CU00	ASA 0927 3.00HP AC	3.00	3.8	IP 55	1130	11971	93	on request
ASA0927AA6EU00	ASA 0927 5.50HP AC	5.50	6,60	IP 55	1175	15032	93	on request

Radiator Style C

material:	aluminum
working temperature range:	-4°F to +176°F (oil temperature)*
air fin shape:	wavy
working pressure:	370 PSI (static)

*...the indicated temperature is the maximum inlet temperature for the cooler radiator. Depending on the sealings in use, the application needs appropriate checking.

Installation System (see more information on page 43)

connection NG 32-UN 1 ⁵ / ₈ "	ILLZASA32U20U00 (2 pieces per cooler required)
connection NG 40-UN 1 ⁷ / ₈ "	ILLZASA40U24U00 (2 pieces per cooler required)

Oil / Air Cooler Standard Range ASA Series 230/460V 60Hz AC



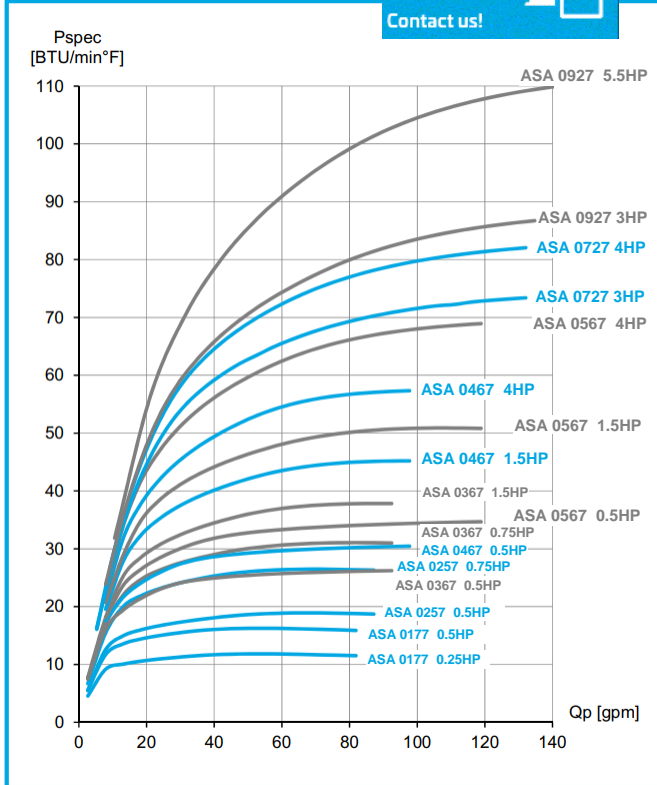
Performance

specific cooling performance

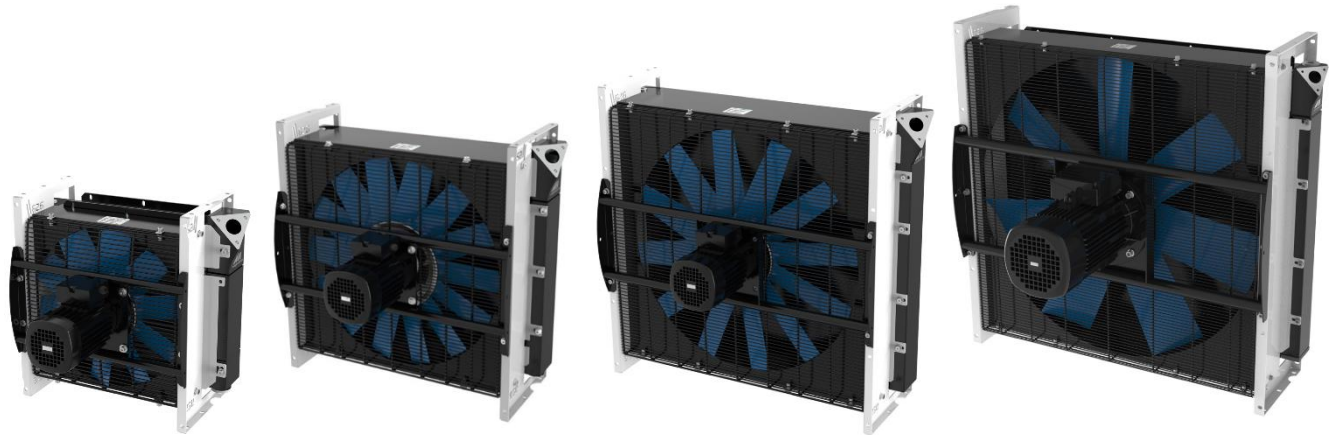
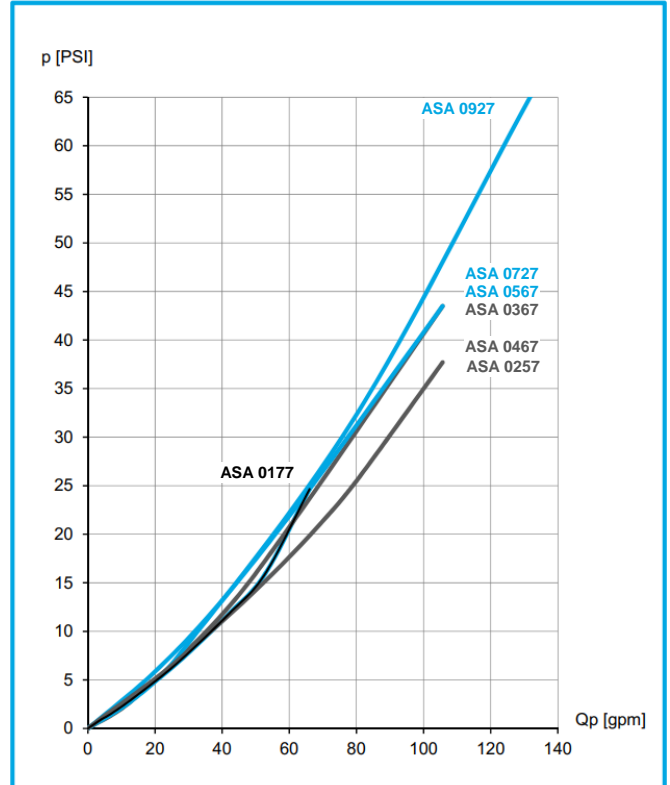
all products
water/glycol
compatibel



Contact us!



pressure drop at 150 SSU



This data sheet and the corresponding scale drawings are to be used as a general guideline and technical overview of our products. Please contact us if more exact information is needed. As we are constantly improving our products, their characteristics, dimensions and weights may also change, although we do our best to incorporate these changes continually. asa assumes no liability for any information therein, any errors, omissions, misprints, nor any direct or indirect damages, losses or costs resulting therefrom. Any cooling performances and general technical values indicated in this catalogue are measured at a test bench according to asa testing procedures or calculated, based on such tests. They represent a basis for your product selection. Due to different conditions in testing and application environments the performance may also vary by +/- 15%. All sound values are determined in accordance with ISO 9614-2, DIN EN ISO 11203 accuracy class 3 or Machinery Directive 2006/42/EG and are A-rated. At some of the performance data, possible differences to competition data are possible. The reason to that are no existing standardized testing procedures on individual subjects, e.g. for cooling performance measurements. Therefore, we recommend all products to be checked under the system operating conditions. This is also true of vibrations and mechanical stress as well as for pressure peaks and thermal stress and any other relevant factors. General tolerances according to DIN ISO 2768-vL. General tolerances for casted parts according EN ISO 8062-3 (DCTG 10). Tolerances for rubber parts are according to ISO 3302-1 (class M4-F+C). The tolerances of welding seams are defined by quality group D according to EN ISO 10042, if it is not specified on the actual scale drawing or data sheet. Any form of liability is excluded for the information included in this datasheet. All details and calculation values are checked to the best of our ability, but these do not ensure any intrinsic product properties; due to the wide-ranging possible applications, it is advised that all technical data herewith included be confirmed through testing carried out by the end-user. asa technology Produktions- und Vertriebs GmbH reserves the right to modify the product without any separate notification. This refers to both technical data and the product itself. Furthermore, it is herewith specified that the datasheet does not substitute the corresponding scale drawings, assembly and installation guidelines, nor the operating instructions.

DD-AUC-Series-AC-US-en-rev0-Homepage © asa hydraulik of America, April 2022 page 3/4

Oil / Air Cooler

Standard Range ASA Series

230/460V 60Hz AC



Options

motor data	alternative voltages, frequencies, IP classes, etc on request
temperature switch	ILLZTH4765KU00, ILLZTH6065KU00 (page 51)
tread plate & radiator guard	see page 47
internal bypass	alternative bypass settings (7 PSI / 50 PSI)
Intermediate plate NG40	ILLZASA40-40G12U00 (page 43)

